



onvlee

EST. 1965

ENGINEERING (PTY) LTD



DCS

ONVLEE CABLETRAY SOLUTIONS

WHY ALUMINIUM CABLE TRAYS?

- Aluminum cable trays are lighter than steel trays.
- Aluminum is highly resistant to corrosion
- Aluminum has excellent electrical conductivity
- Aluminium Cable trays reduce the need for ongoing maintenance.
- Aluminum trays can be easily fabricated on-site
- Aluminum is a highly recyclable material

GET A QUOTE



Receive your personalised quote in just 24 hours

BUILT TO LAST

Experience peace of mind and long-lasting value with the Onvlee Cable System. Meticulously crafted with durable Aluminium materials, ensuring it stands the test of time in an ever evolving market.

Enjoy the advantages of hassle-free delivery and a dedicated customer service team. When you choose Onvlee, you're not just making a purchase; you're investing in a reliable, long-lasting solution, fortified by over 58 years of manufacturing expertise within the automotive industry.

THE ONVLEE ADVANTAGE:

- **All-in-One Solution:** Onvlee is able to supply trays, accessories and mounting solutions with easy to follow instructions
- **Factory Direct:** Order with ease direct from manufacturer
- **Complete on-time delivery:** Onvlee goes the extra mile to ensure our product and accessories arrive on-site in-full and on-time
- **Direct Delivery:** Get your orders shipped straight to your installation site
- **Last longer:** High quality grade, anti-corrosive tempered aluminium
- **Cost Saving:** Reduced installation time, no post fabrication treatments required and reduced maintenance

ONVLEE ALUMINIUM BENEFITS.

65% WEIGHT REDUCTION

- Less load on structure
- Ease of handling and installation

x2.5 ELECTRICAL CONDUCTIVITY

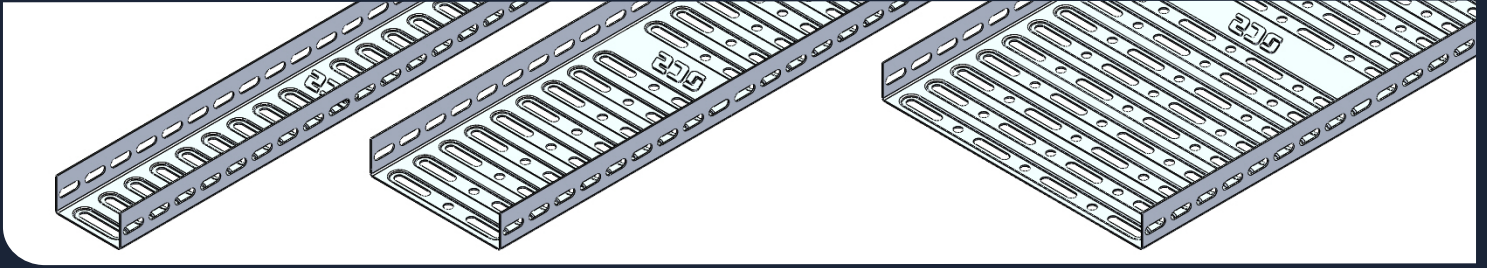
- Improved power transmission
- Reliable grounding
- Improves the overall energy efficiency
- Reduced electromagnetic interference

x3 THERMAL CONDUCTIVITY

- Improved heat dissipation, keeping cable cooler
- Accomodate more cables
- Reduced risk of sparks/ignition

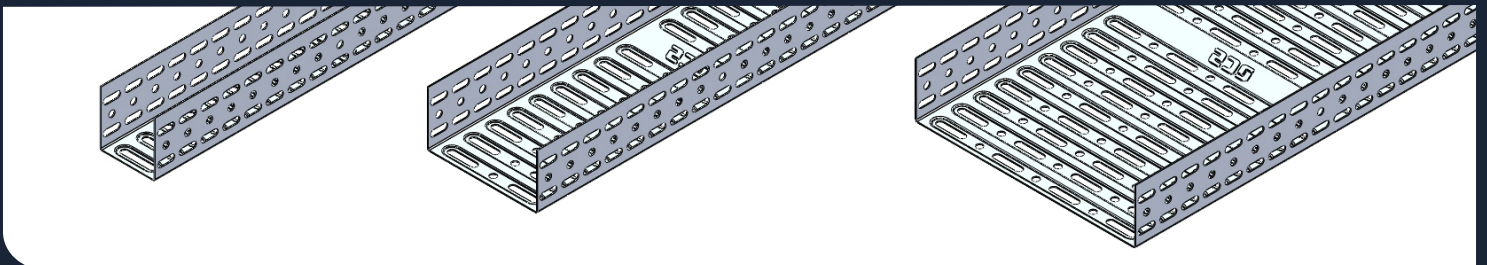
38mm Trays

| Part Number | Description | Length | Width | Height | Thickness | Material |
|-------------|-----------------------|--------|-------|--------|-----------|-----------|
| 76CT38 | 76 x 38mm Cable Tray | 3000 | 76 | 38 | 1.4 | Aluminium |
| 152CT38 | 152 x 38mm Cable Tray | 3000 | 152 | 38 | 1.4 | Aluminium |
| 304CT38 | 304 x 38mm Cable Tray | 3000 | 304 | 38 | 1.4 | Aluminium |



76mm Trays

| Part Number | Description | Length | Width | Height | Thickness | Material |
|-------------|-----------------------|--------|-------|--------|-----------|-----------|
| 76CT76 | 76 x 76mm Cable Tray | 3000 | 76 | 76 | 1.4 | Aluminium |
| 152CT76 | 152 x 76mm Cable Tray | 3000 | 152 | 76 | 1.4 | Aluminium |
| 304CT76 | 304 x 76mm Cable Tray | 3000 | 304 | 76 | 1.4 | Aluminium |



Tray Lids

| Part Number | Description | Length | Width | Height | Thickness | Material |
|-------------|-----------------------|--------|-------|--------|-----------|-----------|
| CL76 | 76 x 12mm Cable Tray | 1500 | 76 | 12 | 1.4 | Aluminium |
| CL152 | 152 x 12mm Cable Tray | 1500 | 152 | 12 | 1.4 | Aluminium |
| CL304 | 304 x 12mm Cable Tray | 1500 | 304 | 12 | 1.4 | Aluminium |



**All dimensions are in mm



AUTOMOTIVE
MANAGEMENT



QUALITY
MANAGEMENT

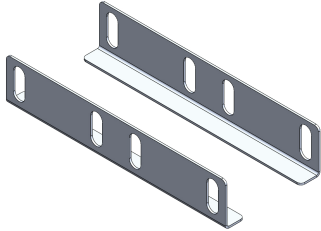
A PROUD MEMBER OF

SAPVIA
South African Photovoltaic Industry Association

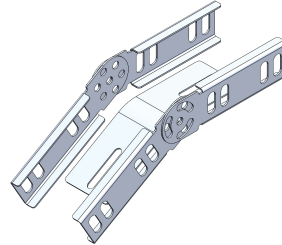
Accessories available to suit all tray sizes

| Part | Description | Thickness | Material |
|------------------------|---------------------------------------|-----------|-----------|
| Splice | Joining Splice | 1.4 | Aluminium |
| Riser/Dropper | Adjustable Angle Riser/Dropper | 1.4 | Aluminium |
| 90°-Junction Tray | 90° Bend Junction Trays & Lids | 1.4 | Aluminium |
| T-Junction Tray | T-Junction Trays and Lids | 1.4 | Aluminium |
| 4-Way Junction Tray | 4-Way Junction Trays & Lids | 1.4 | Aluminium |
| Reducer/Expander Width | Junction Reducer/Expander Tray Widths | 1.4 | Aluminium |
| Tray Divider | Divides Tray Into Multiple Channels | 1.4 | Aluminium |

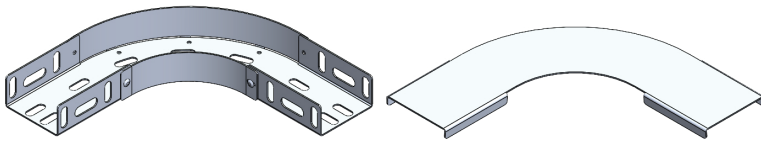
**All dimensions are in mm



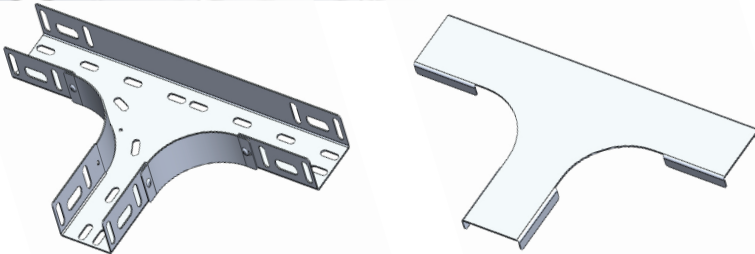
Splice Set



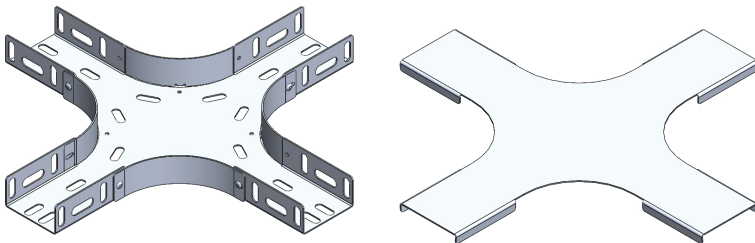
Riser/Dropper



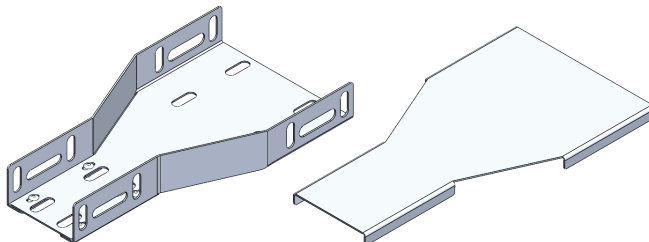
90°-Junction Tray & Lid



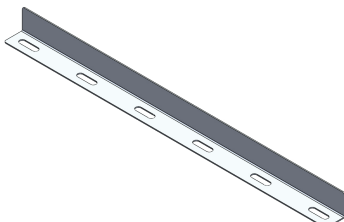
T-Junction Tray & Lid



4-Way Junction Tray & Lid



Reducer Expander Tray & Lid



Tray Divider

*Fasteners supplied with accessories