

SPLICE ROOF WALKWAY ASSEMBLY (IES)

STEP 1: JOINING OF 2x WALKWAYS

PARTS REQUIRED:

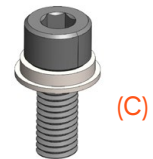
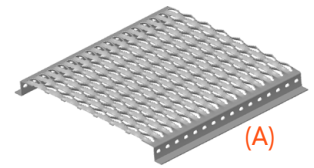
- 2x Walkways (A)
- 2x Mounting profile (Cut to length - 240mm) (B)
- 8x M8x20 Cap screws per mounting rail (C)
- 8x M8 Flat washers per mounting rail (C)
- 8x M8 Spring washers per mounting rail (C)
- 8x Profile nuts per mounting rail (D)

TOOLS REQUIRED:

- 6mm Allen Key
- Torque wrench

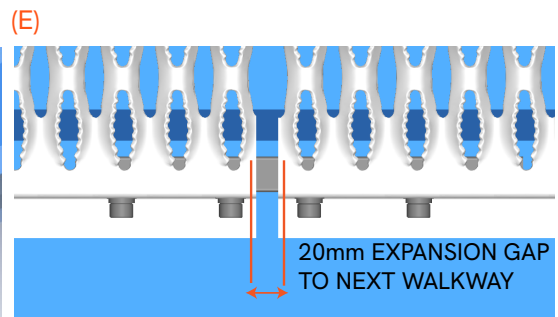
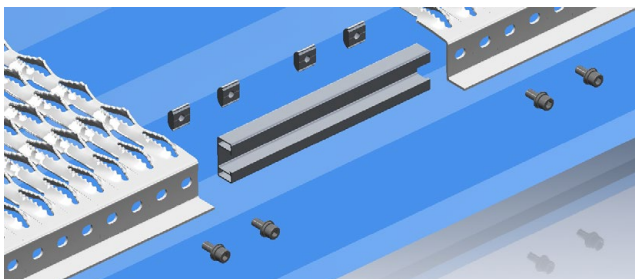
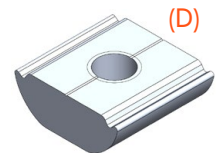
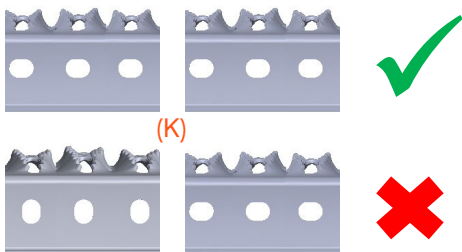
INSTRUCTIONS:

1. Place the M8x20 cap screw with the flat & spring washer (C) through the slots on the walkway profile (As per below). Preferably with at least 1 hole spacing between the bolts.
2. Loosely screw the profile nut (D) onto each bolt (C)
3. Slide the mounting rail (B) over the profile nuts (D) on the one end of the walkway (A), and tighten the bolts once in the desired position
4. Slide the joining walkway (A) over the mounting rail (B) and tighten the bolts once in position
5. Ensure 20mm expansion gaps between consecutive walkways (E)




Note: All M8 bolts to be tighten to a torque of 24nm

OVAL HOLES ON SIDE OF WALKWAY TO MATCH ON CONSECUTIVE LENGTHS (K)



WALKWAY SPLICE ASSEMBLY KIT BOM (IES)

Item	Description	Quantity	Part CAD Image
IEM#10	Rail (top fix) 20x240mm AL6063 T6 Mill	2	
IEM#3	Cap Screw - M8x20mm SS304	8	
IEM#4	Spring Washer M8 SUS304	8	
IEM#5	Flat Washer M8x16x1,5 SUS304	8	
IEM#6	Aluminium Rail Nut Winged AL6005 T5	8	
IEM#12	Laser Cut Clamp Washer - 40x40mm	10	